



ENTER Mental
Health

ENTER Mental Health Annual Report 2023-2024

ENTER Mental Health Network

AGM

WARSAW 28.06.2024

ENTER in 2023-24: an overview

1. Steering Group Activity and Membership

2. Webinars

3. Research

- Two projects submitted in 2023/2024
- Possible new projects and new sources of funding in 2023 and 2024
- Collaboration with Synergia continues
- **TRISE, collaborative Marie Curie with 6 European countries continues**

4. Training: the ENTER Academy, an EU platform on training in mental health;

5. Communicating about ENTER on Enter Website.



ENTER

Mental
Health



ENTER

Mental
Health

ENTER IN 2023-24: AN OVERVIEW

History: ENTER AGMs

- 2000 London
- 2001 Paris
- 2002 Warszawa
- 2003 Stockholm
- 2004 Bodø
- 2005 Tampere
- 2006 Perth
- 2007 Vilnius
- 2008 Paros
- 2009 Ljubljana
- 2010 Aarhus
- 2011 Rovigo
- 2012 Sarajevo
- 2013 Warszawa
- 2014 Barcelona
- 2015 Dublin
- 2016 Saint Andrews
- 2017 Slagelse
- 2018 Athens
- 2019 Bodø
- 2020 Paris virtual
- 2021 Essen virtual
- 2022 virtual
- 2023 Ljubljana
- 2024 Warszawa
- 2025 Dublin
- 2026 Lausanne

ENTER Membership in June 2024

ENTER has 18 members in 13 countries

1. Bosnia Herzegovina, Tuzla
2. Denmark, Zealand
3. Finland, Tampere
4. France, Paris
5. Germany, Essen
6. Greece, Athens EPAPSY
7. Ireland, Dublin
8. Italy, Rovigo
9. Lithuania, Vilnius
10. Poland, Warsaw, IPIN
11. Poland, Warsaw, APS
12. Slovenia, Faculty of Social Work
13. Slovenia, Social Protection Institute
14. Greece, Athens, Department of Public and Community Health
15. Spain, Barcelona
16. UK, London, Middlesex
17. UK, Mental Health Foundation
19. UK, Saint Andrews

Developing partnerships

Partnership connections that have been made to date:

- Association Québécoise de réhabilitation psychosociale (AQRP)
- ISPS
- Mental Health Europe (contact Camille project)
- ENUSP
- EUFAMI

Developing partnerships-

New partnership connections in 2023/2024:

1. The Brooks Oxford University, England, dr Sarah Bekaert;
2. The Nursing Department, RMIT University Australia and Europe; Spain, prof. Rhonda Wilson;
3. The Addiction Psychiatry field specialty (part of the Addiction Medicine, Department of Psychiatry) of the Lausanne University Hospital and the Lausanne University, Switzeland, prof. Yasser Khazaal;
4. Department of Medicine and Surgery University of Milano-Bicocca, Italy.

Membership questions

2023-2024

- EU countries not represented in ENTER: *Belgium, Bulgaria, Croatia, Czech Republic, Estonia, Latvia, Luxemburg, Malta, Netherlands, Portugal, Romania, Slovakia, Sweden, Norway*
- Other possible candidate countries: *Albania, Algeria, Macedonia, Moldavia, Morocco, Iceland, Israel, Serbia, Switzerland, Tunisia, Turkey, Ukraine, Norway...*
- **Valantis Papathanasiou is no more collaborating with EPAPSY. There is a question of the other representative person from EPAPSY**



ENTER

Mental
Health



ENTER

Mental
Health

1.

STEERING GROUP ACTIVITY AND MEMBERSHIP

The Steering Group

Members of Steering Group

- *Marja Kaunonen (Tampere University, Finland), Chair (2020-2024)*
- *Lidia Zabłocka-Żytka (APS, Poland), Secretary (2020-2024)*
- *Mark Mohanan (Trinity College, Ireland), Vice-chair for communication (2022 – 2026)*
- *Emmanuelle Jouet (GHU, Paris, France), Vice-chair for training (2022-2026)*
- *Lene Lauge Berring (Slagelse, Denmark), treasurer from 09/2021 - 2024*
- *Mojca Urek (University of Ljubljana, Slovenia), Vice-chair for research (2022-2026)*

***THANK YOU FOR THE STEERING GROUP MEMBERS OF THEIR
ACTIVITY DURING THE YEAR!***



ENTER

Mental
Health

The Steering Group

Ten online and one face-to-face Steering Group meetings between AGM in June 2023 and till AGM in June 2024:

08.09.2023.

30.09.2023

13.10.2023.

03.11.2023.

01.12.2023.

19.01.2024.

23.02.2024.

26.04.2024

24.05.2024

14.06.2024

And one face to face meeting in Warsaw 15.03.2024.



Mental
Health

ENTER Steering Group Elections 2024

The three existing Vice-chairpersons were up for election for four years in 2022 for the period 2022 to 2026:

- Vice Chair for Training: Emmanuelle Jouet
- Vice Chair for Research: Mojca Urek
- Vice Chair in charge of Communication: Mark Mohanan

Three positions are up for election in 2024:

- Chairperson: (Marja Kaunonen)
 - Treasure: (Lene Lauge Berring from 2021)
 - Secretary: (Lidia Zabłocka-Żytka)
- Request for nominations emailed to ENTER members on the 27th April 2024; a reminder sent on the 20th May 2024





ENTER

Mental
Health

2.

WEBINARS IN 2023/2024

From Conference to Webinars

And, due to the participation of trainees and the quality of speakers that accepted to participate, but also because, the « world » has changed and from now a digital presence online is very important to strengthen our legitimacy, visibility and our corporate identity, the steering group decided to go on with the principle of webinars (in a lighter version) for 2021:

Webinar 2020: Nursing in the Pandemic

- 1 Nursing and Mental Health
- 2 Nursing and New Tech
- 3 New roles in Nursing
- 4 Nursing and Addiction

Webinar 2021: Nursing in the Pandemic Serie (follow-up)

- 1 Nursing And Service User Participation
- 2 Empowerment of Mental Illness Service Users: Lifelong learning, Integration and Empowerment
- 3 Mental Health Promotion in the Pandemic

The Final Webinar of ERICA project 04.11.2021 <https://vimeo.com/592706945/50fd4220a4>



ENTER Mental Health

ENTER Webinars

Webinar 2023: Nursing And Service User Participation on 14th Jan
(*End of the 2022 Serie*)

Webinar 2023:1 Child and Adolescent Mental Health, 21th February

Webinar 2023: 2 Recovery in Mental Health: What'up in Europe?, 15th April

Webinar 2023: Next Generation Mental Health researchers, 28th of November (*New serie*)

Webinar 2024: Trauma Informed Care, 23th of January

Webinar 2024: Next Generation Mental Health researchers, 26th of March

Webinar 2024: Next Generation Mental Health researchers, 14th of May



ENTER

Mental
Health

PROPOSITION BE DISCUSSED

Series that could be come back each year, at the same date:

- Next Generation Mental Health Researchers
- Mental Health Promotion Research: Approach and methodology
- What is new in Research all over Europe?
- Others ideas

The Annual conference recorded:

- To propose some video free in replay
- To have a list of paid video



ENTER Mental
Health



ENTER Mental
Health

3.

RESEARCH AND PROJECTS

History: ENTER projects

Six major ENTER projects have been funded by the European Commission:

- OSCAR (2001-2004)
- ISADORA (2002-2005)
- EMILIA (2005-2010)
- PROMISE (2009-2012)
- CAMILLE (2013-2015)
- ERICA (2019-2021)

And one by the Norwegian Government:

- Citizens Against Depression (2014-2016)

Other projects use the ENTER network to find partners.

Examples: ORION, ORION-PRO, GEMMA, ABC-TWO, DURESS, BEING ME.

ENTER research history

- The ENTER AGM in Rovigo in May 2011 was the first to workshop possible subjects for new ENTER projects.
- The 2012 AGM in Sarajevo produced a Project Development Tool, aimed at
 - having the ENTER network ready, should relevant funding calls be published
 - checking that all members are involved in possible project ideas.
 - helping each member get to know other ENTER sites' research interests and priorities
- From 2013, ENTER has consolidated its partnership with SYNERGIA, Milano, for identifying and setting up possible EU calls

Submitted in 2017-2018

- One new project has been submitted (HORIZON 2020 – PM 06-2017) Promoting mental health and well-being in the young : **The MeHaS Project**
- **In 2019, ERICA project** was funded.

Submitted in 2020

- two projects have been submitted (neither of them received funding):
 - **2020 - PENELOPE** (JUST, REC). *Lead: The Group for Transcultural Relations (GRT) (Milano, Italy), ENTER partners: Poland, Scotland, Germany.*
 - **2020 - LGBT+ Ageing Academy: Learning to deliver LGBT+ Inclusive Care (ALICE)** - ERASMUS+, *lead: Faculty of Social Work – Slovenia. ENTER partners: University of Middlesex, France, Greece, Ireland. Other partners: Netherlands and Norway.*

2021-2022 ENTER projects activities

Submitted in 2021

- Submission of proposal **B.R.A.I.N. Bringing relief and awareness to immigrants in need** (AMIF-2020-AG-CALL, EC, Directorate-general migration and home affairs). *Lead: The Group for Transcultural Relations (GRT) (Milano, Italy), ENTER partners: France, Greece, Poland, Ireland, Germany, Finland;* **not funded, but on reserve list**
- Re-submission of „ALICE“ in May 2021: Title: **LGBT+ Ageing Academy: Learning to deliver LGBT+ Inclusive Care (ALICE)** , Erasmus+. *ENTER Partners: University of Ljubljana (coordinator), GHU Paris, TCD Ireland, Epapsy Greece, and two other partners: University of Strathclyde (UK) and Stichting Roze 50+ (Netherlands);* **not funded, consortium is looking forward for the next ERASMUS+ call in 2023.**

2022-2023 ENTER projects activities

Submitted in 2022:

Preventing Child Maltreatment by Virtual Reality and Training for Parents/PCM_VR in CERV-2022-Daphne Call. April 2022. Lead: Tampere University, France, Poland, Germany, Italy, Slovenia (Institute for Social Protection RS). **It didn't receive the funding.**

- Submission of proposal (AMIF-2023-TF2-AG-CALL-02 - Integration and inclusion at regional and local level, deadline: 16th May 2023. *Lead: The Group for Transcultural Relations (GRT) (Milano, Italy), ENTER partners: France, Greece, Poland, Ireland, Germany, Finland (other ENTER members invited as associated partners).*
- **04.05.2023** *Lead: The Group for Transcultural Relations (GRT) (Milano, Italy) decided not to apply and informed the partners*

2023-2024 ENTER projects activities

Submitted in 2023:

TRISE - Trauma Responsive and Informed Society in Europe

Focus: Trauma involved workforce

Call: MSCA Doctoral Networks, HORIZON-MSCA-2024-DN-01-01

Consortium: Eija Paavilainen (TAU), Alexander Baldaccihno (USTAN), Evanthia Sakellari (UNIWA), Anna Odrowaz-Coates (APS), Brian Keogh (Trinity College of Dublin), Ana Marija Sobocan (UL), Lene Berring (SDU), Yasser Khazaal (CHUV)

Without more investment in protecting workers, health systems are at risk. This issue extends beyond healthcare and involves society as a whole. Workers face trauma, leading to stress, burnout, or mental health issues. There's a need to create restorative working environments for traumatized individuals using Trauma-Informed Practices. This complex issue requires understanding trauma as a subjective experience, developing practices to reduce secondary trauma, and recognizing societal pathways to enhance restorative environments. TRISE aims to train researchers on workforce wellbeing and trauma. We will integrate knowledge from various fields to develop trauma-informed practices and create restorative work environments. Despite Europe's challenges, expertise in trauma-informed care is lacking. TRISE addresses this gap by educating the next generation of researchers.

2023-2024 ENTER projects activities

Submitted in 2024:

DigiCOPE

Call: Erasmus + KA220-HED - Cooperation partnerships in higher education

Partners: Tampere, Slovenia, Poland, Spain

Focus: Digital competences into older people care education

The project aims to enhance education by integrating digital competences into older people care education, empower educators and students by providing tools and skills for effective teaching and learning, promote digital proficiency awareness by raising awareness among stakeholders, foster community collaboration by cultivating collaboration within the DigiCOPE Community, and establish national partnerships in digital wellbeing and care by collaborating for integrated digital practices.

2023-2024 ENTER projects activities

Submitted in 2024:

Title: Parental Awareness and Professionals Courage:
Addressing Child Maltreatment

Acronym id : DARE_TO_STOP_CM

Call: DAPHNE/CERV

Duration: 3 years (2025-2027)

Submitted: 29th May

Coordinator: *Tampere University, Finland*

Partners: Social protection institute of the Republic of Slovenia (Slovenia), *APS (Poland), GHU Paris (France)*

Idea: partly from Erica II (though no VR perspective)

Project situation update

7 projects, previously submitted, are still on the books

- *LGBT+ Ageing Academy: Learning to deliver LGBT+ Inclusive Care (ALICE)*
- CAMILLE_LA: Empowerment of Children and Adolescents of Mentally Ill Parents through Training of professionals working with children and adolescents _ Legal Advocacy (Tampere)
- MeHaS: Promoting mental health and well-being in the young (APS, Warsaw)
- LINC: Lifelong Learning Integration for Network Communication
- THESEUS: Quality of Service Delivery in the Adriatic area
- SUAV: Supporting Mental Health Service Users who are Victims of Violence
- Dementia support and LGBT citizens

Enter other activities in area of research

RESEARCH AND PUBLICATION WORKSHOP (14.9.2021)

- Other topics of research interest to the partners (e.g. self-harm in young people; alternatives to restraint).
- A problem of taking the lead.
- UK partners raised an issue of Brexit and impossibility to take a part as partners or leads in research projects.
- The idea to work on ENTER publications (either monographs, thematic issues of journals). Need to develop a publication strategy.

ENTER RESEARCH MEETING, 2nd December 2021

There were good ideas about possible themes for Horizon call.

- to pioneer the development of a panEuropean programme for the development of the service user advocacy role
- user participation in mental health and especially peer support - to map progress in different partner countries at different levels: political, institutional and individual
- another axis was the resumption of various health/mental health promotion training programs

New calls published in 2022/2023 and 2023/2024 (Synergia)

- Presented in ENTER AGM 2023, 2nd June 2023 in Ljubljana (live)
- Presented in SG meeting, 1st December 2023 (ZOOM)
- Presented in SG meeting in Warsaw, 15th March 2024 (Synergia joined via ZOOM)
- Will be presented in ENTER AGM, 28th June 2024.

Network Agreement Modifications:

*The ENTER steering group wants to introduce an idea for creating a new Enter Member Position **ENTER EMERITI***

- To honour the activity of the ENTER members who have retired
- Invitation was sent to former chairs Peter Ryan, Tim Greachen and former secretary Ian Dawson in spring 2023.
- all accepted invitation
- Discussion during AGM 2024 on other nominations for future

4 ENTER Training Programmes

- Four training programmes produced by ENTER
 - OSCAR : not online, not up-to-date, only in English
 - EMILIA : online, needs updating, needs more translating work, many countries still using it, Canada has just begun using it...Only English but there are versions in Finnish; Spanish, Polish, French
 - CAMILLE : recent, online, already needs some updating: Translated into Finnish, Norwegian, Polish, German and Italian
 - PROMISE (guidelines with criteria for quality training): online, needs updating. Translated into French, English and several other languages
- The Academy must be consolidated in order to disseminate this training and future training produced in ENTER projects
- 2017 Slagelse proposition: study the possibility of ENTER becoming a non-profit making organisation (a Foundation?) in order to attract funding so that we can promote, update and disseminate this material
- Essential to underline the mission of ENTER : promoting training and research for quality mental health promotion and recovery-based approaches to care across Europe!

Disseminating ENTER training modules

- One of the strong points of the ENTER Mental Health network is training.
- In 2013, the Steering Group conducted a survey:
 - How ENTER partner organisations are using the output from these completed projects. In particular, the training resources that have been developed as part of the project work packages.
 - Which of our ENTER partner organisations have the interest/ capabilities/ resources/ technological skills to support ENTER Mental Health in setting up a distance-learning platform.
- A key objective for 2018-2019: the ENTER Academy
 - Meeting in Barcelona November 2016
 - ENTER Academy meeting at Slagelse conference June 2017
 - Need for updating ENTER training material on ENTER website



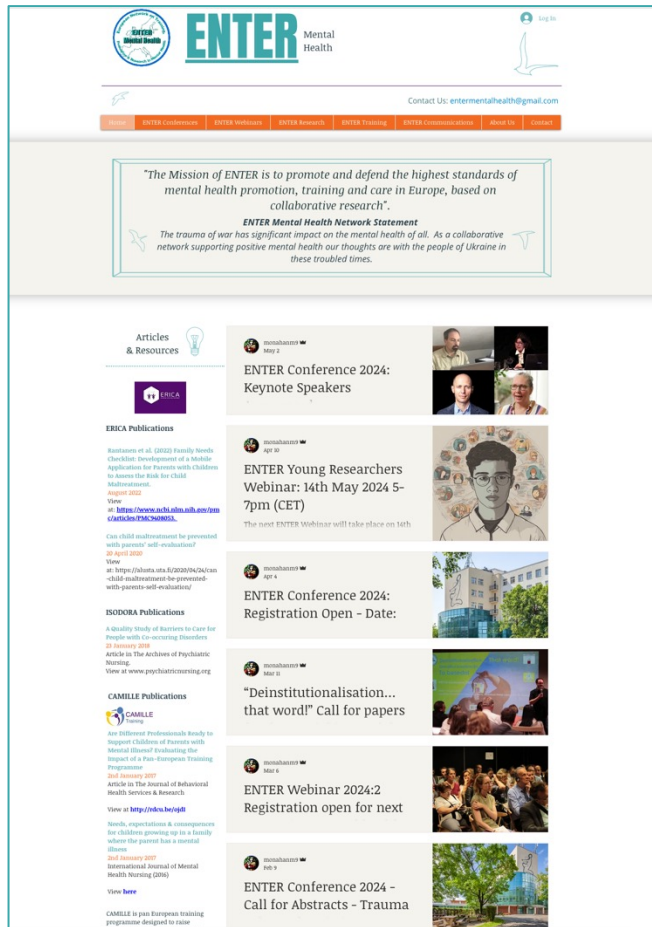
ENTER

Mental
Health

4.

COMMUNICATING ABOUT ENTER ON ENTER WEBSITE

ENTER VP Communications Update 2023-24



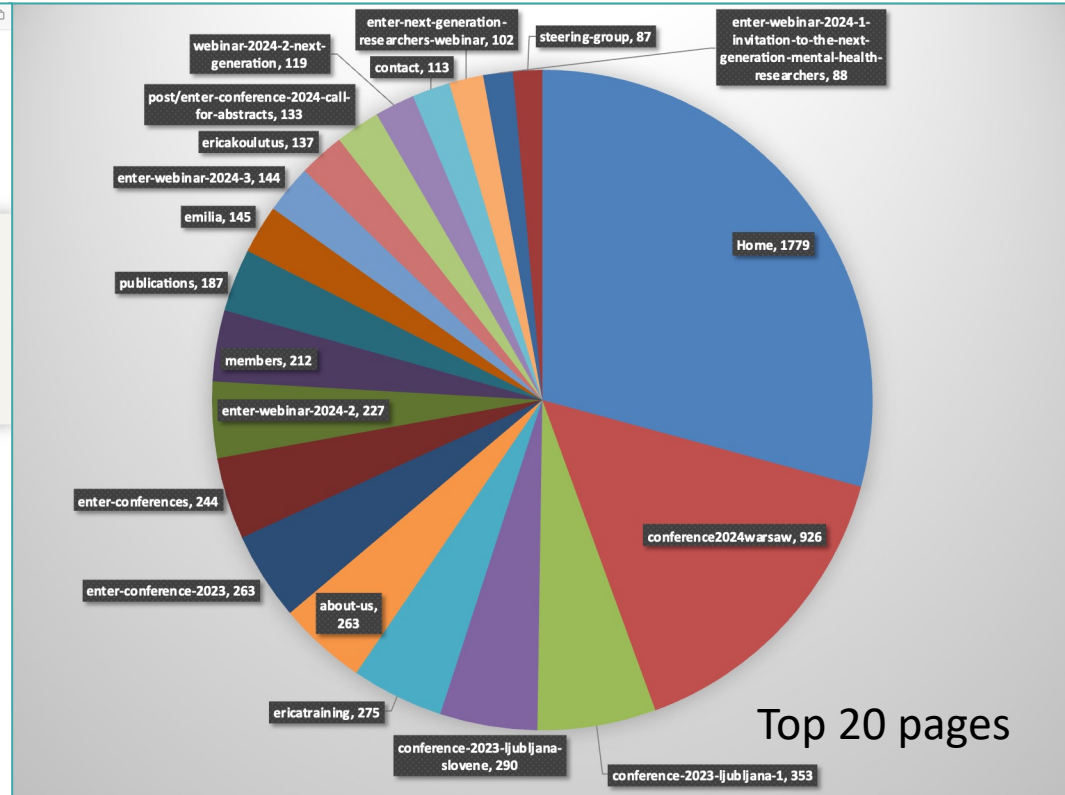
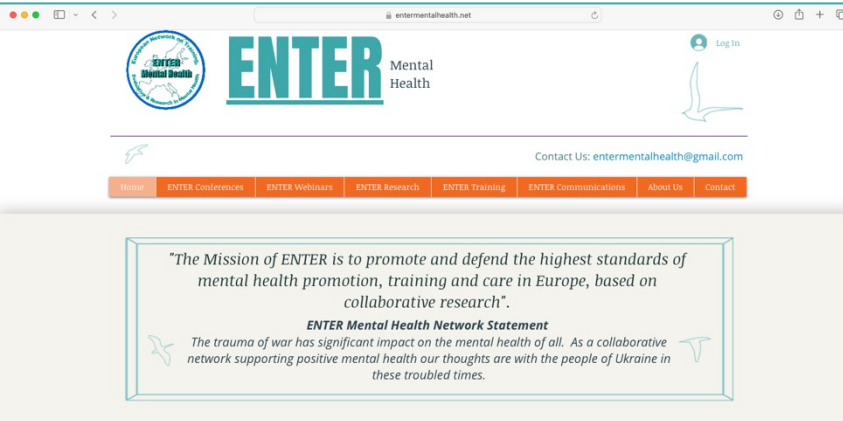
Website costs

Funding of website still maintained by TCD

On-going costs €250 per annum

Currently being funded by VP for Communications and Chairperson

Website Traffic



Articles & Resources

ERICA Publications

Rantanen et al. (2022) Family Needs Checklist: Development of a Mobile Application for Parents with Children to Assess the Risk for Child Maltreatment.
 August 2022
 View at: <https://www.ncbi.nlm.nih.gov/pmc/articles/PMC940805/>

Can child maltreatment be prevented with parents' self-evaluation?
 20 April 2020
 View at: <https://alusta.uta.fi/2020/04/24/can-child-maltreatment-be-prevented-with-parents-self-evaluation/>

ISODORA Publications

A Quality Study of Barriers to Care for People with Co-occurring Disorders
 23 January 2018
 Article in The Archives of Psychiatric Nursing.
 View at www.psychiatricnursing.org

CAMILLE Publications

Are Different Professionals Ready to Support Children of Parents with Mental Illness? Evaluating the Impact of a Pan-European Training Programme
 2nd January 2017
 Article in The Journal of Behavioral Health Services & Research
 View at <http://rdcu.be/ogdt>

Needs, expectations & consequences

ENTER Conference 2024: Keynote Speakers

ENTER Young Researchers Webinar: 14th May 2024 5-7pm (CET)

The next ENTER Webinar will take place on 14th

ENTER Conference 2024: Registration Open - Date:

"Deinstitutionalisation... that word!" Call for papers

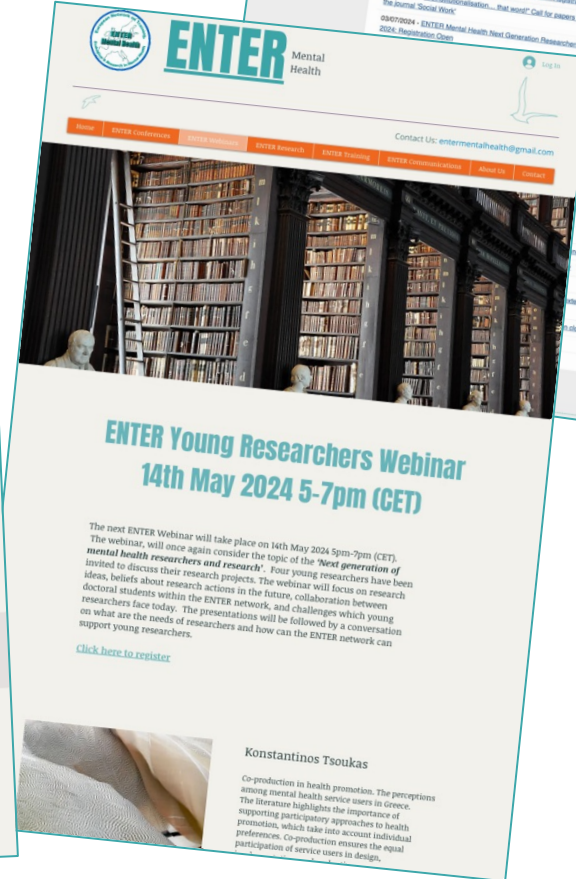
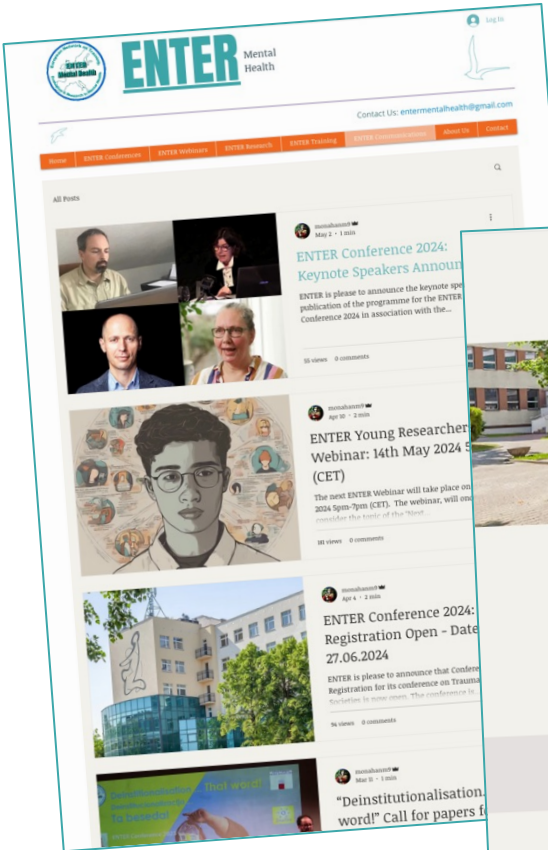
ENTER Webinar 2024:2 Registration open for next

Year to date (20th May 2024)

Total Page Views - 8117

Unique Visitors - 3993

Website acts as a platform



Newsfeed, Conference, Webinars (4), Post and Message Repository

ENTER Dissemination

Training packages:

- Working as a dissemination platform ERICA Project
 - 2 pages figure in Top 20
 - EU, Finland
 - >400 page accessions

Noted on latest applications

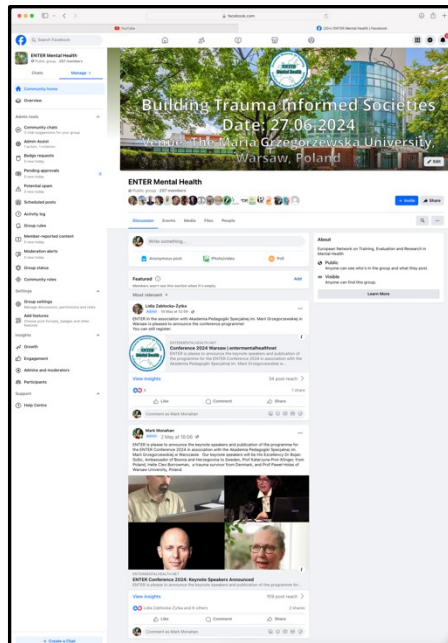
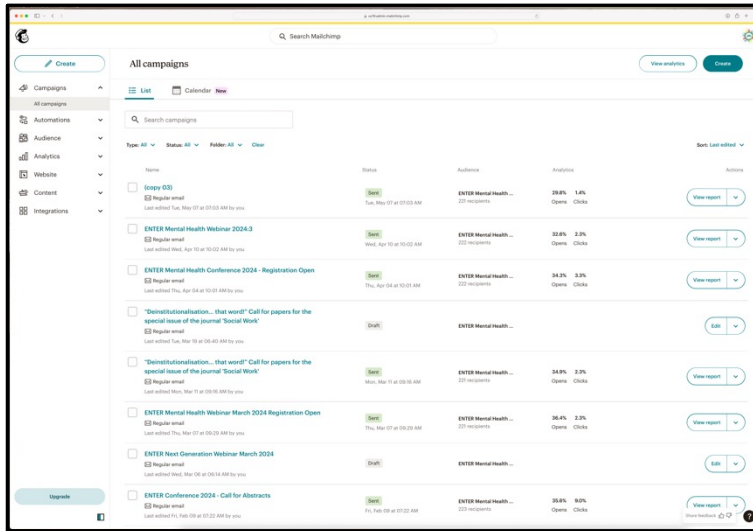
YouTube channel

- 236 views

The image shows a screenshot of the ENTER website and associated training materials. At the top, the website header includes the logo and name "ENTER Mental Health" with contact information "Contact Us: entermentalhealth@gmail.com". Below the header is a navigation menu with items like "ENTER Conference", "ENTER Webinar", "ENTER Resources", "ENTER Training", "ENTER Communications", "About Us", and "Contact Us". The main content area features a photograph of people in a training session. Below the photo, there is text titled "ENTER Training Packages" and a list of projects: "OSCAR: Staff training in 'Managing Stress & Violence at Work'", "ISADORA: providing integrated services for people with dual diagnosis" (with the Isadora logo), and "EMILIA: Aimed disadvantage through training". A separate section titled "The ERICA Trainer Handbook" is also visible, along with a slide for "Module 01 Introduction to the ERICA Project".

The image shows a screenshot of a YouTube channel's content list. The channel name is "ENTER Mental Health". The list displays various video uploads, including titles such as "Mental Health: Overview of the ERICA Project", "OSCAR: Staff training in 'Managing Stress & Violence at Work'", and "ISADORA: providing integrated services for people with dual diagnosis". The list includes columns for video titles, thumbnails, and dates. The interface includes standard YouTube navigation and search elements.

Member Contacts



Greatest Challenge

Keeping up to date with members (68)

System blocking mails

Member involvement

Member response

Facebook 297 subscribers

Mailing lists consolidated (Mailchimp, Wix, Excel)

>200 contacts

Limitations by package and price plans available

Principle vehicle:

Mailchimp mailing list revised

members on the list

Website carries an archive of communications

Day to day traffic via:

entermentalhealth@gmail.com

Christmas greetings sent

Communication only as good as how they are recirculated by the membership

*Members need to forward on messages to networks to increase reach of the organisation



ENTER

Mental
Health

THANK YOU! 😊